

Alberta

# An Overview of Forests and Forest Management in Alberta

August 11, 2015



**Alberta's Forests  
Forestry & Economy  
Provincial Planning Hierarchy  
Sustainable Forest Management**



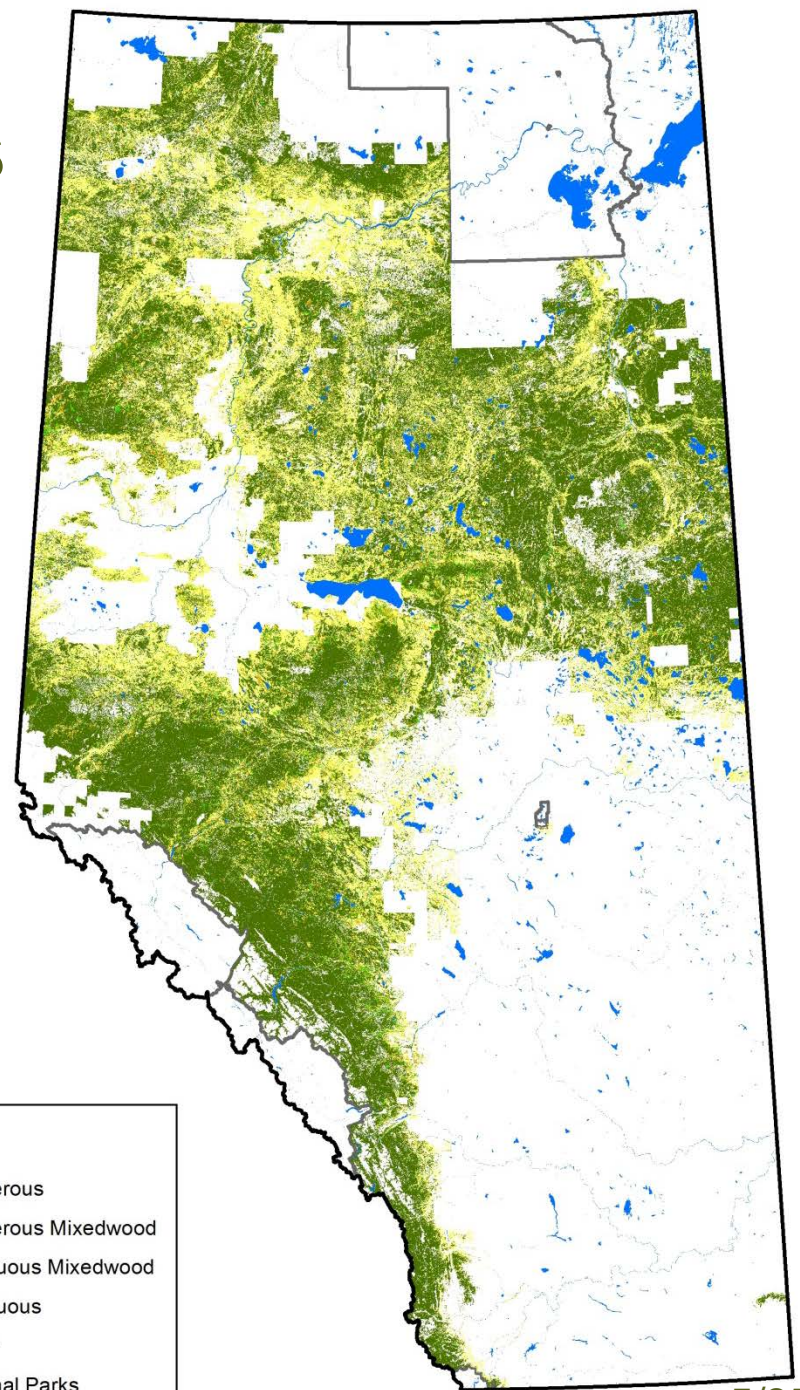
# Alberta's Forests

- National parks
- Metropolitan areas
- Forests cover nearly 60 per cent of Alberta, with 38 million hectares of forested lands
- Almost all forests are public resource in Alberta
- Historical split between Green and White areas



# Alberta's Forests

- Land Cover

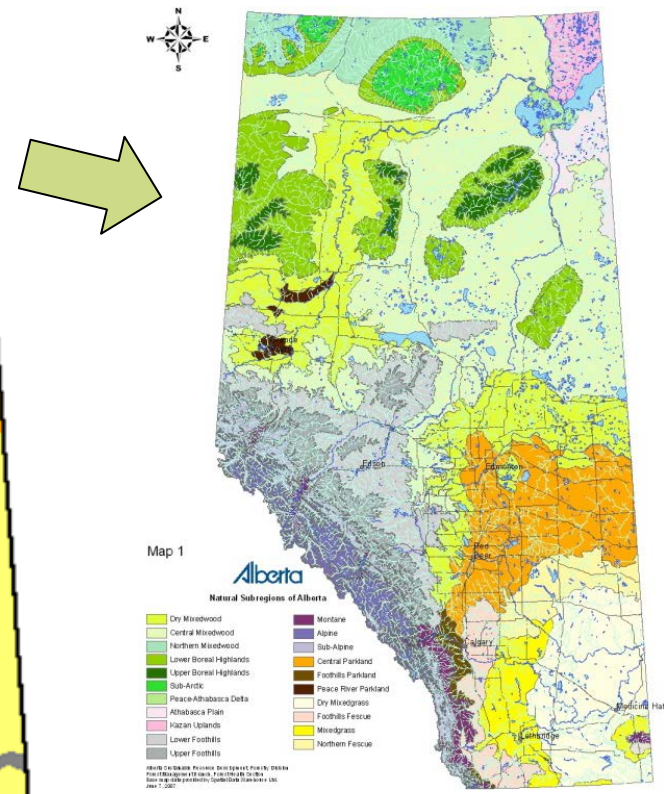
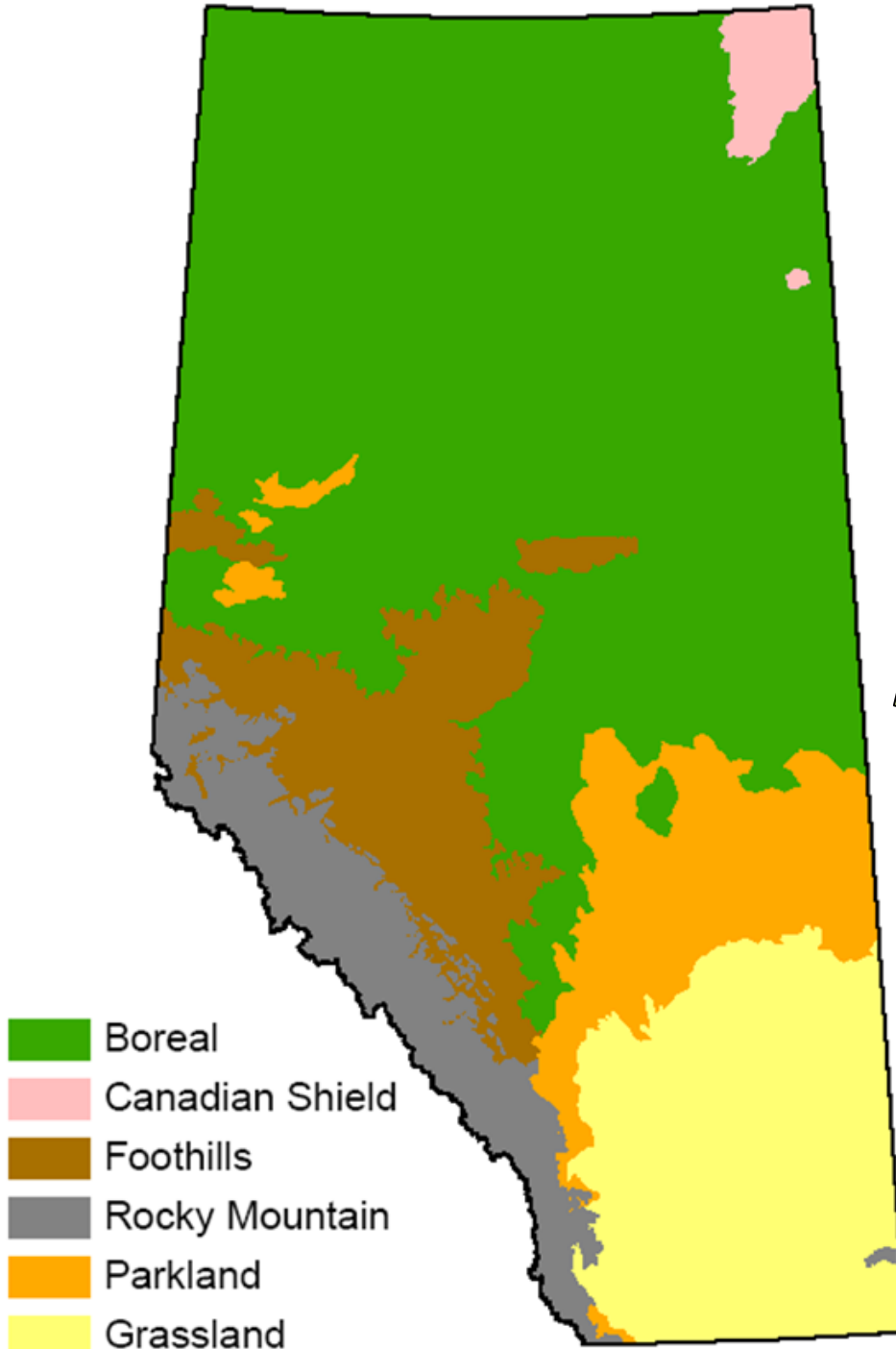


## Legend

- Coniferous
- Coniferous Mixedwood
- Deciduous Mixedwood
- Deciduous
- Water
- National Parks

# Alberta's Forests

## Natural Regions and Subregions



# Alberta's Forests

---

- **Disturbances**
  - Fire



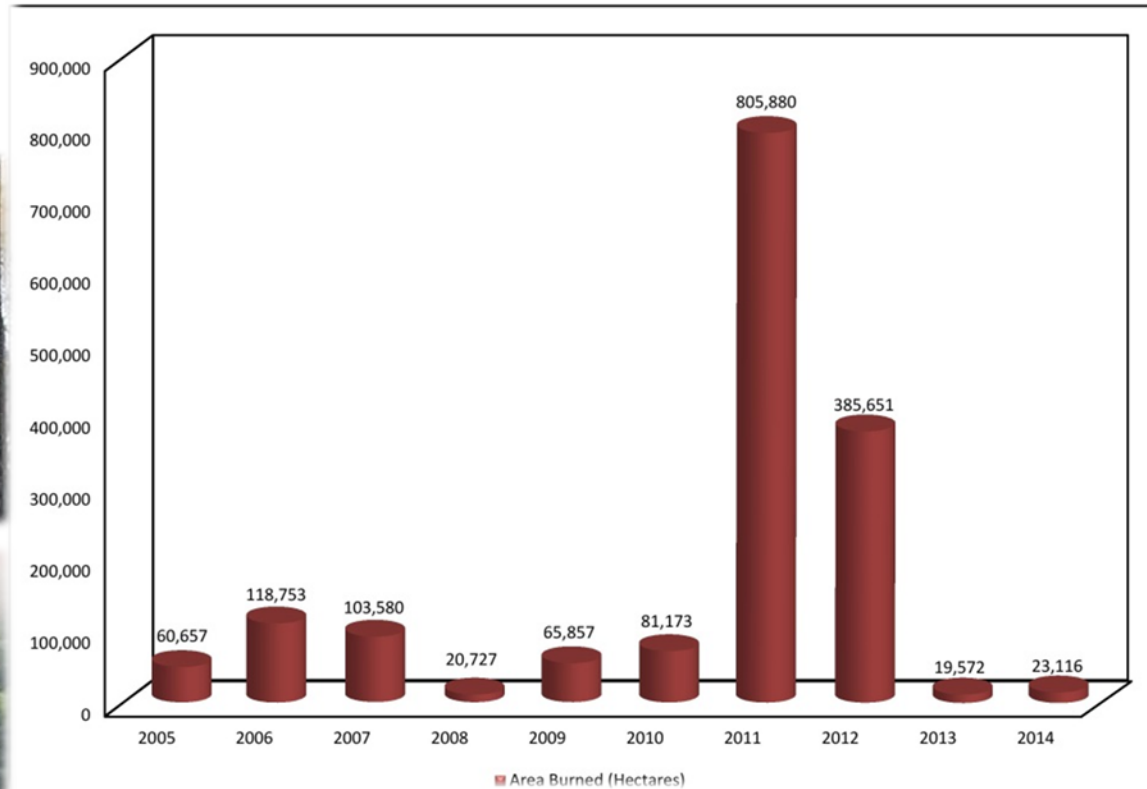
# Alberta's Forests

- Disturbances

- Fire



Area Burned (2005-2014)





# Alberta's Forests

- **Disturbances**

- Fire
- Insects and diseases
- Anthropogenic activities





**Alberta's Forests  
Forestry & Economy  
Provincial Planning Hierarchy  
Sustainable Forest Management**

# Forestry & Economy

---

- **Alberta owns and is responsible for management of forests on provincial public lands**
- **Forest Management Agreement areas**
  - Responsible for planning on crown land and reforestation after harvest
- **Timber quotas**
  - Timber harvesting rights for a specified volume from a specific area

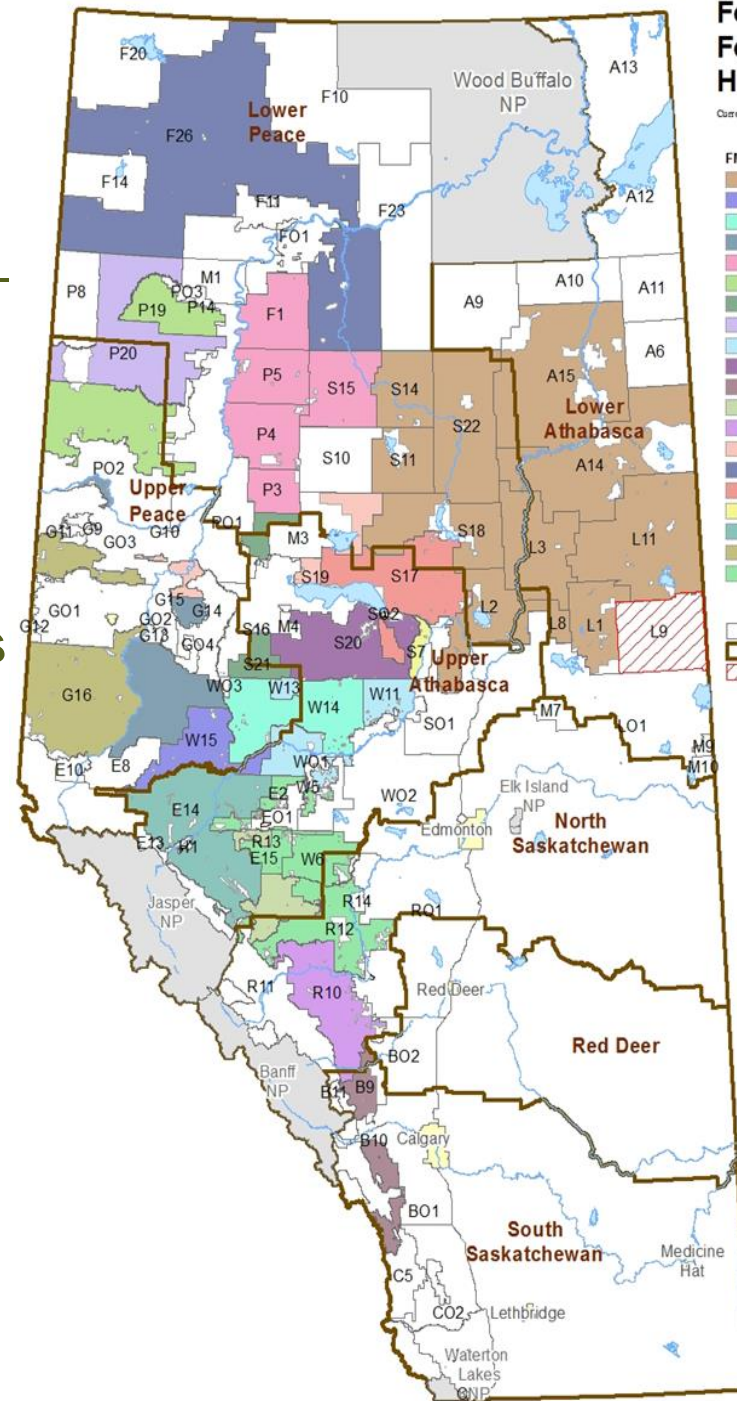
# Forest Tenures

## 20 FMAs

- 22 million hectares
- 62% of Green Area

## 137 Timber Quotas

- 98 Coniferous
- 39 Deciduous



## Forest Management Units, Forest Management Agreements, and Holders

Current as of April 30 2012

### FMA Holders

- ALPAC Forest Products Incorporated
  - ANC Timber Ltd.
  - Blue Ridge Lumber Inc.
  - Canadian Forest Products Ltd.
  - Dalhousie-Marubeni International Ltd. (East)
  - Dalhousie-Marubeni International Ltd. (West)
  - Gordon Buchanan Enterprises Ltd. and Tolko Industries Ltd.
  - Manning Diversified Forest Products Ltd.
  - Millar Western Forest Products Ltd.
  - Slave Lake Pulp Corporation
  - Spray Lake Sawmills (1980) Ltd.
  - Sundance Forest Industries Ltd.
  - Sundre Forest Products Inc.
  - Tolko Industries Ltd. (High Prairie)
  - Tolko Industries Ltd., Footner Forest Products Ltd. and La Crete Sawmills Ltd.
  - Tolko Industries Ltd., Vanderwell Contractors (1971) Ltd. and West Fraser Mills Ltd.
  - Vanderwell Contractors (1971) Ltd.
  - West Fraser Mills Ltd. (Hinton)
  - Weyerhaeuser Company Limited (Grande Prairie)
  - Weyerhaeuser Company Limited (Pembina Timberland)
- Legend:
- FMU Boundaries
  - Land-use Framework Regions
  - Air Weapons Range (Cold Lake)

# Mills in Alberta

- Sawmills
- Pulp mills
- Panelboard mills
- Integrated facilities
- Laminated veneer lumber mills



# Alberta Forestry Economic Impact

---

- **Forestry directly employs 15,400 people in 70 communities and generates over \$5.4 billion in GDP**
- **Economic diversification through the production of:**
  - Lumber, pulp, newsprint and engineered wood products
- **Industry investments in capital projects**
  - Offshore market expansion
  - Generation of electricity from renewable forestry biomass



Shereen Trenchard

# Alberta Forestry Economic Impact

---

- **Four main economic drivers**
  - Expand into new markets
  - Focus on cost and performance competitiveness
  - Retain secure access to fibre
  - Invest in strategically focused, market driven innovation

# Alberta Forest Innovation

---

- **Alberta is continually reviewing standards, monitoring operational and research results, and seeking improvements**
- **New forest management practices**
- **Development of new forest products and technology**



# Alberta Forest Bio-Industrial Innovation

- From forest and field to freeway: Alberta fibre going into auto parts
- Lucrative extracts from Alberta agriculture & forest biomass
- ‘Strengthening’ Alberta forest sector with an eco-friendly adhesive





**Alberta's Forests  
Forestry & Economy  
Provincial Planning Hierarchy  
Sustainable Forest Management**

# Provincial Planning Hierarchy

- Land-Use Framework (LUF)
- Regional Planning
- Sub-Regional Planning
- Integrated Resource Management System (IRMS)



# Land-Use Framework

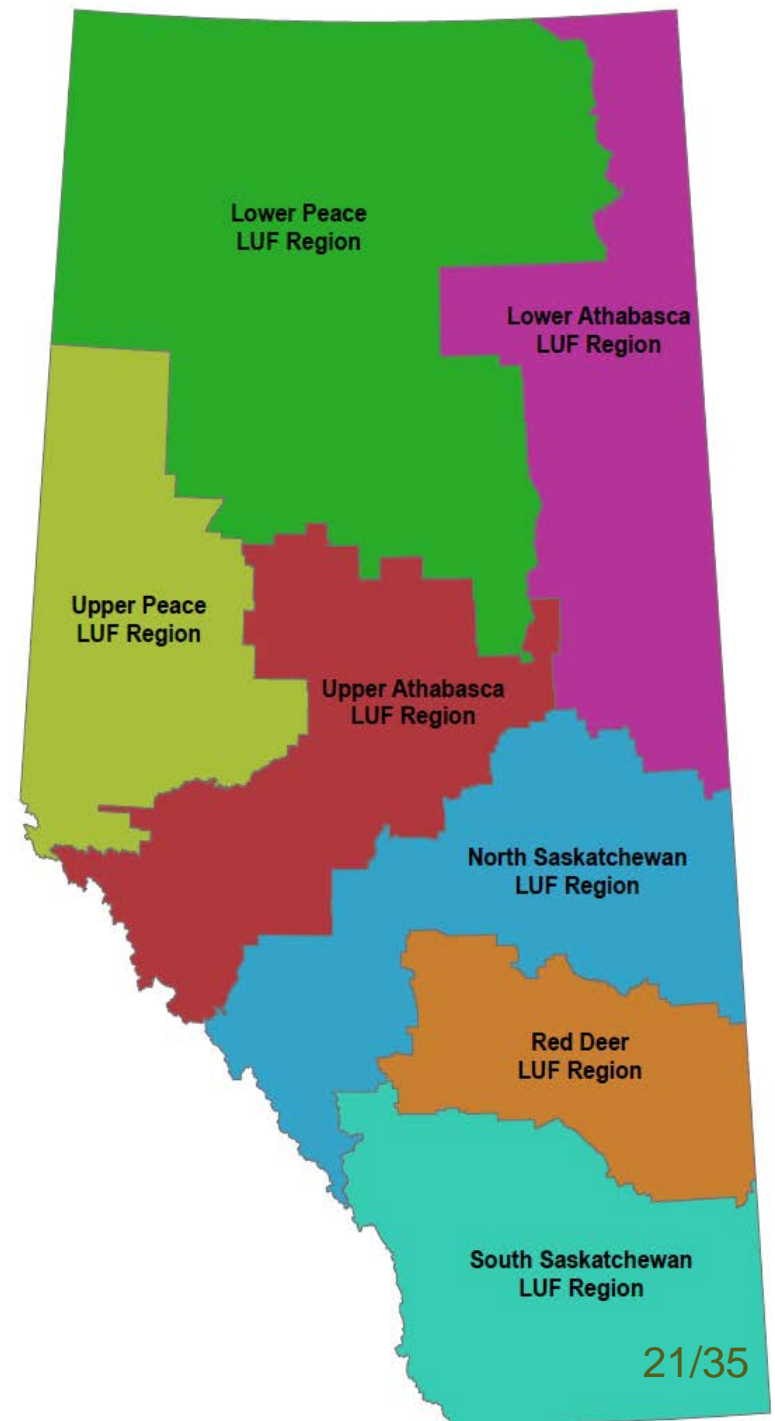
- Blueprint for land-use, natural resource management, and decision-making to manage growth
- Sustains growing economy while balancing social and environmental goals
- Considers the cumulative effects of all activities
- Legally enforceable
- Subject to regular reviews
- Incorporates significant public feedback gathered through extensive consultation



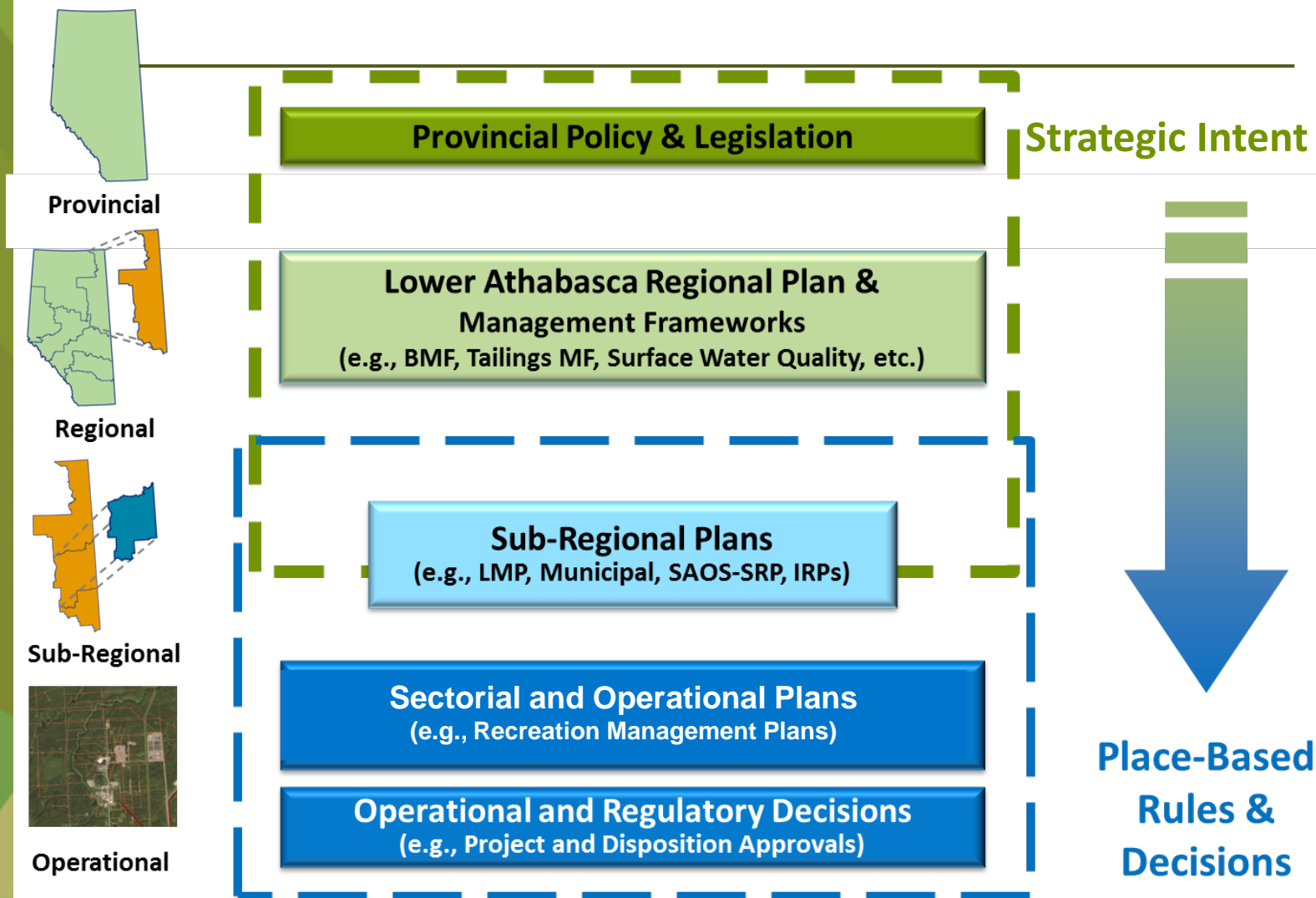
# Alberta's Land-Use Framework

---

- 7 Planning Regions
- Lower Athabasca and South Saskatchewan Regional Plans are completed
- North Saskatchewan Regional Plan in progress



# Regional Planning



# Integrated Resource Management System

---

## Why pursue an IRMS?

- Continued economic and population growth
- Need to manage cumulative effects
- Heightened need for integration and resource optimization
- Growing expectations of public and stakeholders



# Integrated Resource Management System

- Means by which Alberta will achieve responsible resource stewardship and the triple bottom line (social, economic & environment)
- Broadly defined, incorporating the management, conservation and wise use of *all* resources
- Founded upon principles of cumulative effects management



- Adaptation and continuous Improvement
- Knowledge based
- Outcomes driven
- Future focused
- Comprehensive implementation
- Place-based flexibility
- Collaboration

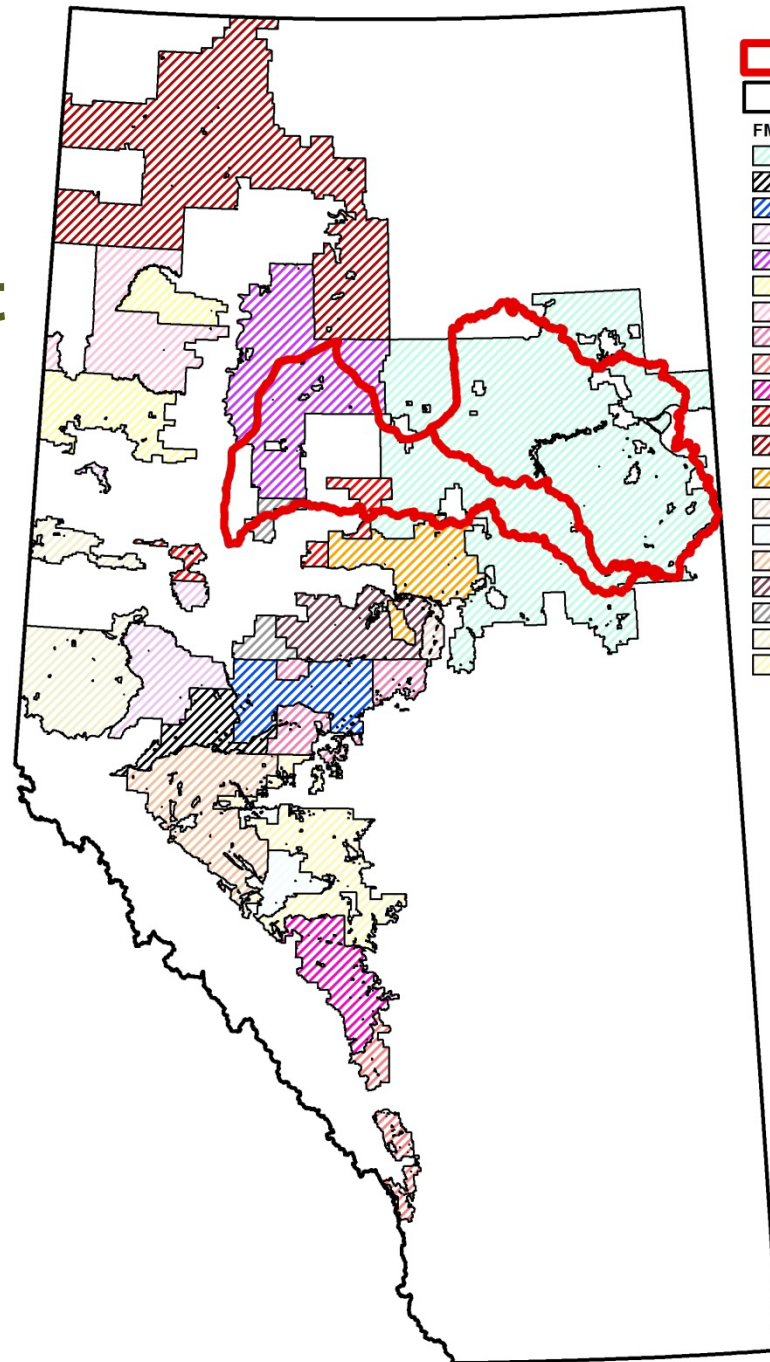




**Alberta's Forests  
Forestry & Economy  
Provincial Planning Hierarchy  
Sustainable Forest Management**



# Sustainable Forest Management



Latvia  
 Alberta

**FMA Holders**

- ALPAC Forest Products Incorporated
- ANC Timber Ltd.
- Blue Ridge Lumber Inc.
- Canadian Forest Products Ltd.
- Daishowa-Marubeni International Ltd. (East)
- Daishowa-Marubeni International Ltd. (West)
- Manning Diversified Forest Products Ltd.
- Millar Western Forest Products Ltd.
- Spray Lake Sawmills (1980) Ltd.
- Sundre Forest Products Inc.
- Tolko Industries Ltd. (High Prairie)
- Tolko Industries Ltd., Footner Forest Products Ltd. and La Crete Sawmills Ltd.
- Tolko Industries Ltd., Vanderwell Contractors (1971 and West Fraser Mills Ltd. (Slave Lake)
- Vanderwell Contractors (1971) Ltd.
- West Fraser Mills Ltd. (Edson)
- West Fraser Mills Ltd. (Hinton)
- West Fraser Mills Ltd. (Slave Lake)
- West Fraser Mills Ltd. and Tolko Industries Ltd.
- Weyerhaeuser Company Limited (Grande Prairie)
- Weyerhaeuser Company Limited (Pembina Timber)

64,589 km<sup>2</sup>   
*Latvia*

63,713 km<sup>2</sup>   
*ALPAC Forest Products Inc.*

# Sustainable Forest Management

---

- **Alberta owns all timber located on crown lands**
- **Alberta government policy does not allow timber harvesting to exceed the forest's ability to grow**
- **Less than one percent of forested land is harvested in any year**

# Sustainable Forest Management

- **The annual forest growth of all inventoried public lands in the province is estimated at 44 million cubic metres**
  
- **The Green Area had a total annual allowable cut of 32 million cubic metres**
  - 19.4 million cubic metres of coniferous
  - 12.6 million cubic metres deciduous
  
- **23.1 million cubic metres were harvested**

Product Category	Total Volume Harvested (m <sup>3</sup> )
Lumber	15,831,325
Panelboard	1,986,440
Pulp for Paper Products	5,263,774
Other	40,936
<b>Provincial Total</b>	<b>23,122,475</b>

# Sustainable Forest Management

---

- **Alberta is committed to the principles and policies of sustainable forest management and responsible stewardship**
- **Forests continue to provide ecological, economic, social and cultural opportunities**
- **Forest management planning is an essential component of:**
  - Sustainable forest management
  - The Alberta planning hierarchy

# Sustainable Forest Management

---

- **Aboriginal People and public are involved in forest management planning**
- **Most of the forest management plans are developed by industry**
- **All forest management plans are validated by Registered Professional Foresters**



# Sustainable Forest Management

---

- **Forest management plans are CSA-based (CSA Z809-02)**
  - Based on Canadian Council of Forest Ministers (CCFM) Criteria for Sustainable Forest Management
  - Provides a credible planning framework
  - Defines system and performance elements
  - Involves a high degree of public involvement
  - Identifies Values, Objectives, Indicators and measurable Targets (VOITs)
  - Monitors real outcomes against forecasts
  - Emphasizes continual improvement / adaptive management
  
- **Voluntary certification**
  - Forest Stewardship Council (FSC)
  - Sustainable Forestry Initiative (SFI)



# Forest Management Planning

---

- **Incorporates trade-off analyses and mitigates impacts of forest operations on other values and users**
- **Manages forest vegetation and minimizes harvest impacts at the landscape level**
- **Completed every 10 years and forecasts forest development to create a desired future forest spanning 200 years**
- **Guides forestry operations using 70 years of spatially explicit harvest forecasting**
- **Subject to performance assessment every 5 years**

# Alberta's Forests Forestry & Economy Provincial Planning Hierarchy Sustainable Forest Management



Alberta

**Thank you**

**Mr. Janis Braze  
Forest Management Branch  
[janis.braze@gov.ab.ca](mailto:janis.braze@gov.ab.ca)**